

# finishes

## TRADITIONAL



## PREMIUM (10% Upcharge)



## DISTRESSED (20% Upcharge)



## CUSTOM FINISHES (Upcharges apply)

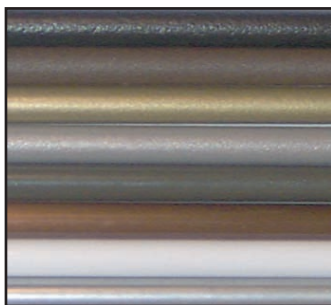


Studio Steel offers custom finishes upon request. Provide a sample of the desired finish, and we will produce a similar Strike-off sample for approval. Fee for each Strike-off applies, and the complexity of final approved finish determines upcharge to fixture.

## EFFECTS (Upcharges may apply.)



## POWDER COAT (Ideal for hospitality or high-humidity areas. Upcharges apply.)



- Black Powder Coat
- Rust Powder Coat
- Brass Powder Coat
- Bronze-Light Powder Coat
- Bronze-Dark Powder Coat
- Copper Powder Coat
- White Powder Coat
- Chrome Powder Coat

Studio Steel recommends that clients view fixtures and finishes at our showrooms, or request finish samples. Each fixture and finish is unique, and hand applied, so variations do occur. Printouts, monitors and brochures also alter colors, hues, tone & texture.



# new borghese finishes

october 2007

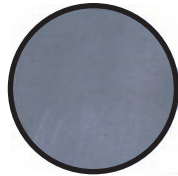
SILVER PEARL



SILVER PEARL  
w/GOLD HIGHLIGHTS

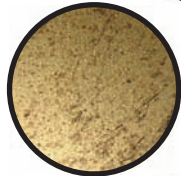
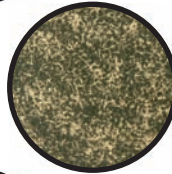


Reference Finishes  
from our collection:



Natural  
Steel

Black  
Gold



Distressed  
Gold



Gold  
Highlights



Gold  
Leaf

Gold  
Mist



GOLDEN PEARL



GOLDEN PEARL  
w/GOLD HIGHLIGHTS



## FINISH SAMPLE



*Sample Strike-off / Finish sample.*

Studio Steel produces finish samples that are available to loan through our design showrooms. Check for nearest showroom at [studiosteel.com](http://studiosteel.com)

Studio Steel recommends that clients view fixtures and finishes at our showrooms, or request finish samples. Each fixture and finish is unique, and hand applied, so variations occur. Printouts, monitors and brochures also alter colors, hues, tone & texture.

